



Case Study: Forest Hill Shopping Centre, Melbourne VIC



www.airmaster.com.au

01 Project Summary

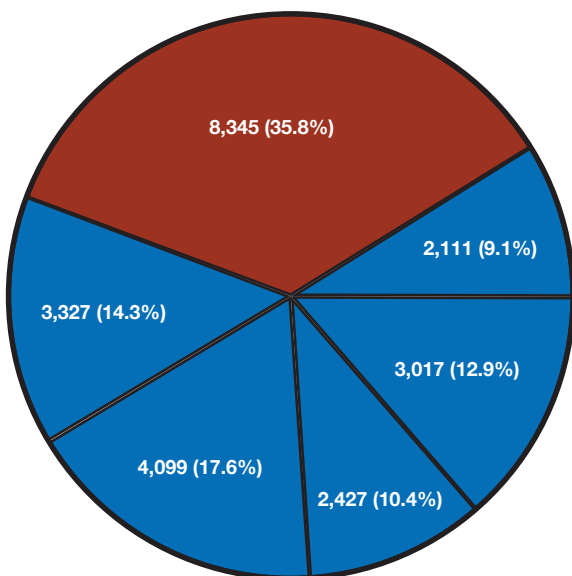
Using the AEP (Asset Efficiency Performance) monitoring system, power consumption was analysed across selected travelators at Forest Hill Shopping Centre to identify savings of recently installed Variable Speed Drives over existing configurations.



02 The Solution

CFSGAM organised for the installation of VSD on selected travelators at Forest Hill Shopping Centre. Airmaster installed sub-metering for these selected units and integrated them into the AEP monitoring system.

After several months of data collection, Airmaster analysed the data to determine the power consumption differences of the VSD's over the original configuration.

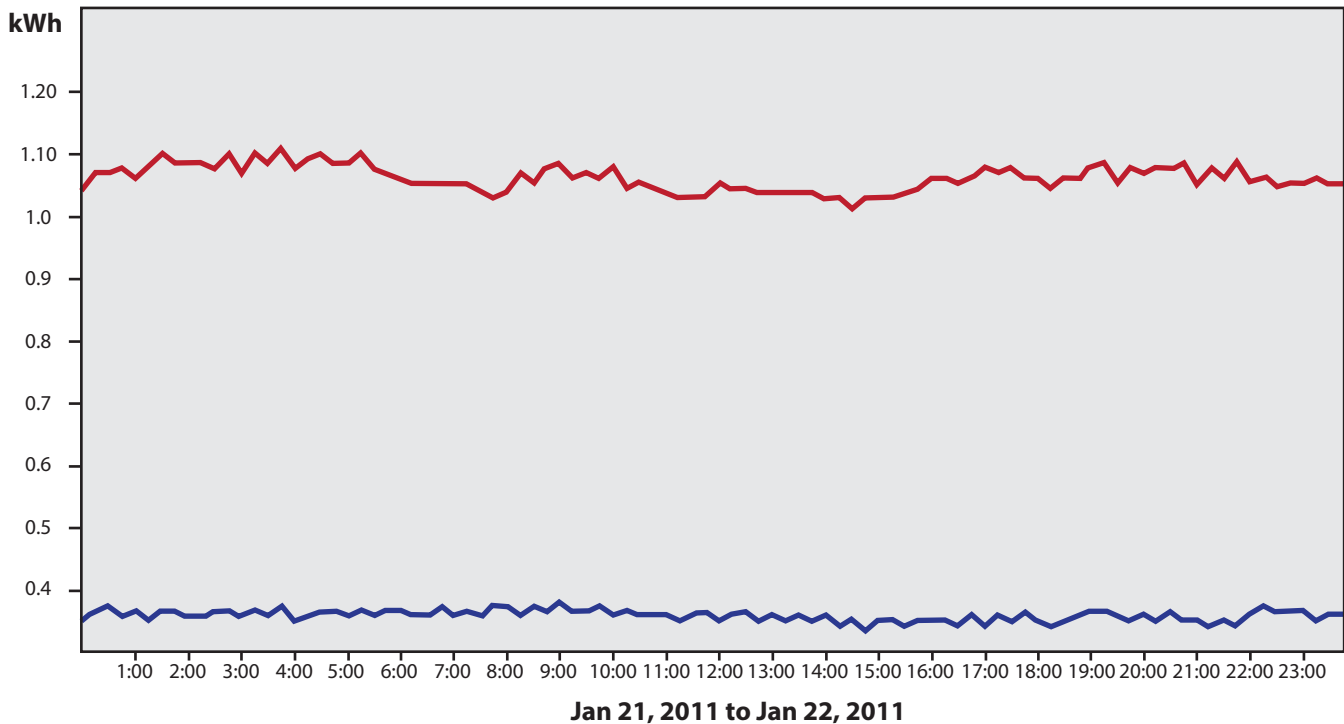


The pie chart on the left demonstrates across the six travelators that have been integrated into AEP the difference in power consumption in kWh's between the travelator that does not have a VSD compared to the five that do since the time of installation.

The red slice is the consumption (kWh) of the travelator with no VSD where as the five others

03 Project Outcomes

Analysis of the consumption data obtained can be demonstrated in AEP to show the following daily power consumption graph. This is an up/down set of travelators, the blue line has the VSD where as the red line does not.



06 Conclusions

From information provided, a reduction in consumption was expected but with the use of the AEP monitoring installation, it was possible to prove as well as determine what the reduction was and the resultant savings.



**Average Annual
Energy Saving**