

# Case Study //

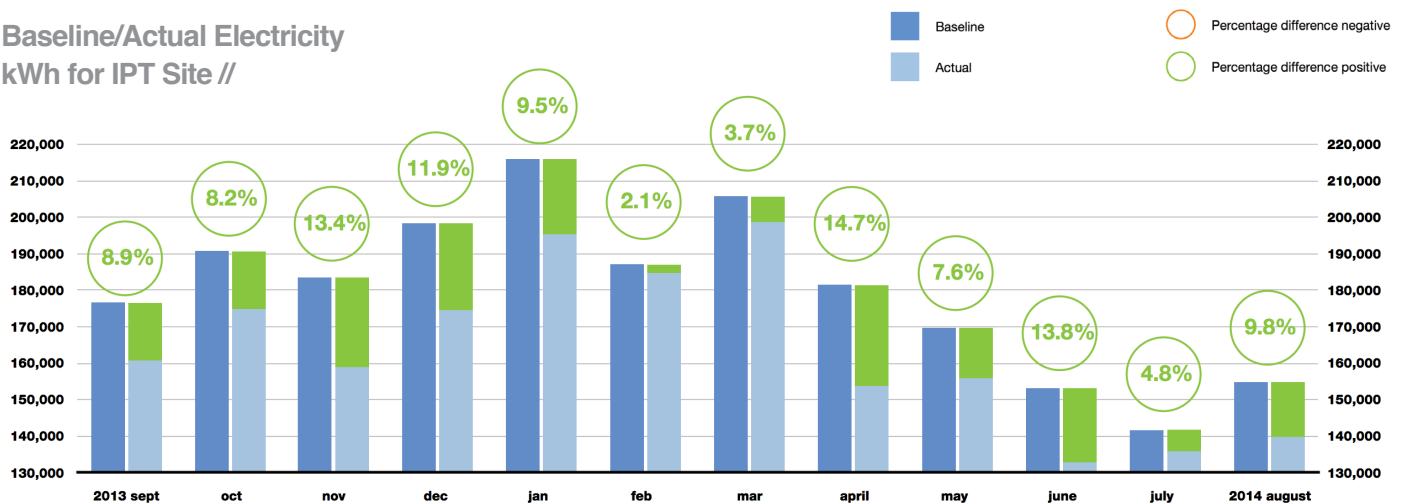
## Innovation Place, Sydney NSW

PlantPRO uses the latest “smart” technology available to provide optimised control, trending, diagnostics, and reporting for Central Air Conditioning Plant. PlantPRO provides significantly greater control flexibility as well as the tools to operate and maintain the plant in the best possible optimised condition; and delivers measurable energy savings.



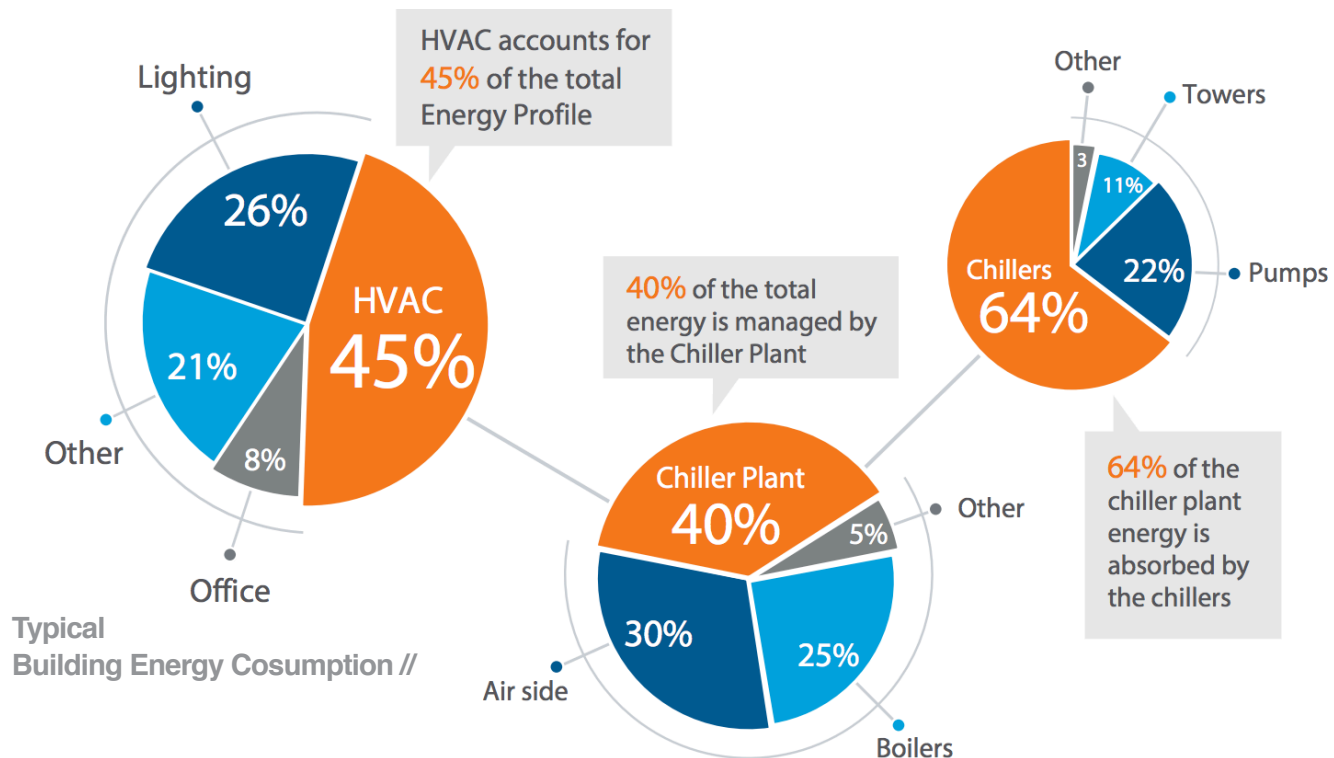
<b>Location:</b>	North Sydney NSW
<b>Building:</b>	23 Storey A-grade office
<b>Rating:</b>	5 star energy rating
<b>Date PP Installed:</b>	13th June 2013
<b>Energy Savings:</b>	10.9% (over baseline readings)
<b>Project Cost:</b>	\$59,000.00
<b>Payback Period:</b>	15 Months
<b>Savings:</b>	\$42,603.00 per annum (estimate)
<b>CO2-e Offset:</b>	250 Tonnes per annum

**Baseline/Actual Electricity  
kWh for IPT Site //**



## Details //

Innovation Place is a 23-storey A-grade commercial office building located in North Sydney. It has been designed to a five-star base building Australian Building Greenhouse Rating and as such has a strong focus on energy efficiency and sustainability. PlantPRO was installed at this site to both optimise the operation of the central plant and to provide advanced measurement and reporting capabilities to the building. Control strategies included active lift optimisation through a combination of chilled water and condenser water reset, which was further enhanced with variable speed primary pumping control. In addition to this, optimised chiller sequencing was employed to ensure the best fit chiller was always sequenced for the given building load.



## The Outcome //

Plant energy consumption compared to normalised baseline data has improved significantly since PlantPro was fully tuned in September 2013, with an improvement of 10.9% over baseline readings.

## About Us //

Airmaster is an award-winning technical solutions company, delivering end-to-end management of heating, ventilation, air conditioning, industrial and process cooling and building automation across Australia and South East Asia. Based in Melbourne and with 12 branches Australia-wide, Airmaster's commitment to sustainability is achieved through a proactive, integrated approach to helping organisations achieve energy efficiency in innovative ways.

[www.airmaster.com.au](http://www.airmaster.com.au)  
1300 247 627

